

For better weaving

GTP offers every weaving mill and loom manufacturer a complete and full range of state-of-the-art weaving accessories, ensuring best weaving performances. We focus on the optimal solution for you, our customers. With quality products, innovations and fast deliveries. Correct and to the point.



GTP... the true Textile Partner

GTP is leader in high-class weaving accessories for more than 110 years. With strong innovation capabilities, GTP is a true textile partner, joining with the customer for the best weaving solution that meets the requirements of your application. GTP maintains sales & service offices in the biggest textile markets worldwide. Discover more information on www.globaltextilepartner.com.

Edition 2009

By GTP Global Textile Partner
K. Steverlyncklaan
8900 Ieper
Belgium

Tel. ++32 57 22 28 96
Fax. ++32 57 22 21 07
E-mail: GTPinfo@globaltextilepartner.com
www.globaltextilepartner.com



Handling manual

For Steel Heddle® harness frames:

- AluPower 124
- XLF 152
- HybridPower 158

For better weaving.

Table of Contents

1	Description of the frame parts	3
2	Storage	4
3	Transport	4
4	Harness frame assembly.....	5
4.1	Connecting the side brace to the profiles	5
4.2	Tool	6
4.3	Disconnecting the side brace from the profiles	6
4.4	Mounting the healds	7
4.5	The R-flex	7
4.6	Setting the center support	8
4.7	Height setting of the DRC30- DRC3-DRC2.....	9
4.8	Setting the third driving element.....	9
5	Installation of the frames on the loom	10
6	Maintenance	10
7	Ordering spare parts and questions.....	11

7 Ordering spare parts and questions

In case you need spare parts for your frames, please send an inquiry to:

sales@globaltextilepartner.com

We will send you a spare part catalogue for the frame you have. With this catalogue, you can order the correct and original Steel Heddle® parts.

For any further technical questions, please address your questions to the above e-mail address, and your question will be answered within 24 hours.

Edition 2009

By GTP Global Textile Partner
K. Steverlyncklaan
8900 Ieper
Belgium

Tel. ++32 57 22 28 96
Fax. ++32 57 22 21 07
E-mail: GTPinfo@globaltextilepartner.com
www.globaltextilepartner.com

5 Installation of the frames on the loom

For installing the harness frames properly onto your weaving machine, please check the machine constructor manual for correct installation guide lines.

It is most important to maintain correct settings of package and side guides.

6 Maintenance

Steel Heddle® recommends cleaning the harness frames at least every six months. This can be done during style change.

Cleaning should to be done with a dry or lightly wet cloth. It is not allowed to clean the frames with water or to put them into water. Always make sure the frame is completely dry.

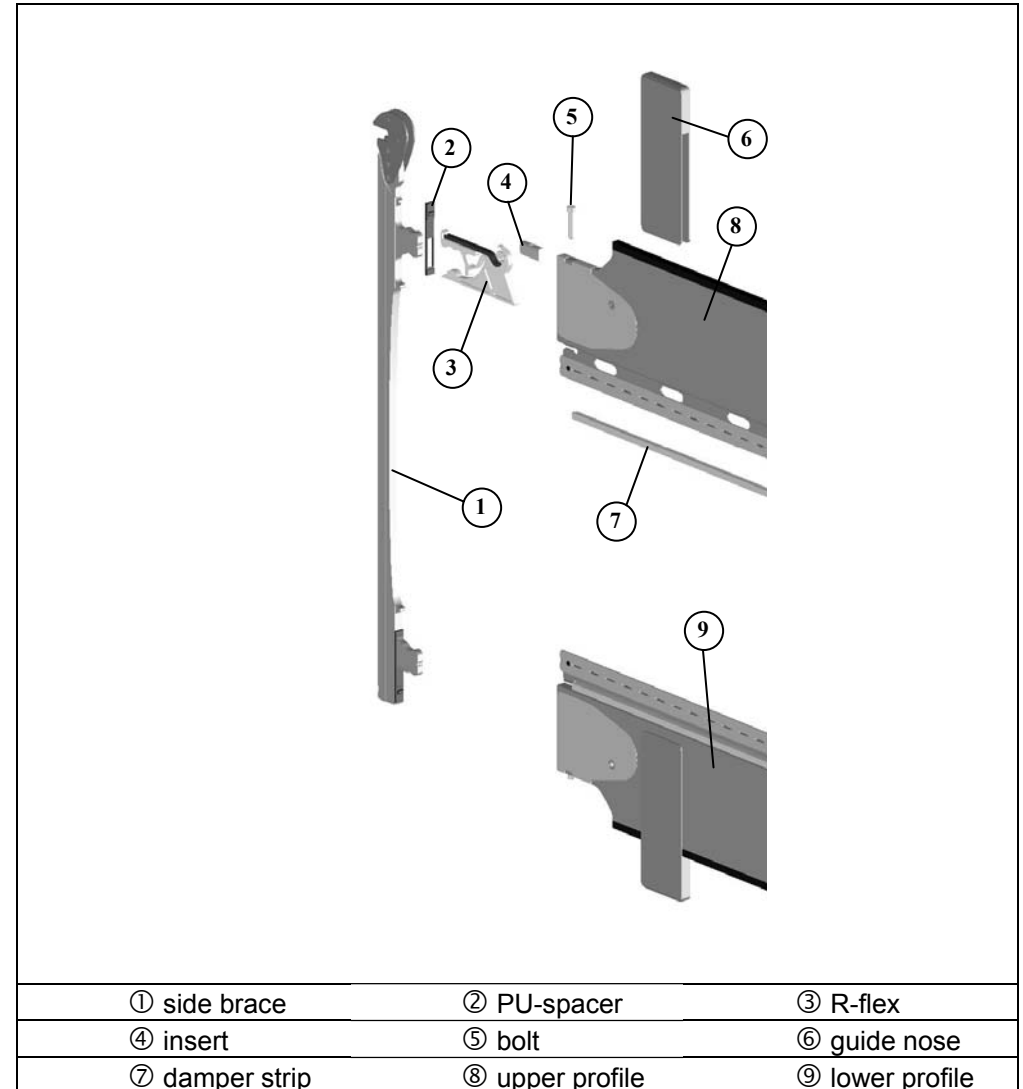
The guide noses do not require any maintenance. Make sure however that no water can come into contact with the wooden guide noses.

Check regularly for damaged or worn parts.

When frames are installed to the weaving machine, check regularly to assure:

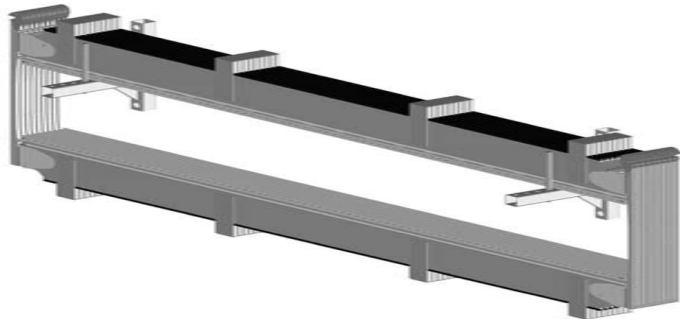
- The side brace connection is still at 7 Nm
- The center support is fixed with 3 Nm

1 Description of the frame parts



2 Storage

- Never put a harness frame on the floor, resting on the connection rod or on the guide noses.
- An appropriate method for storing harness frames is hanging them horizontally on carrying staves, fixed to the wall, as is shown in the picture underneath.
- We do not recommend piling up the harness frames on the floor; you may risk damage to your profile due to the weight.



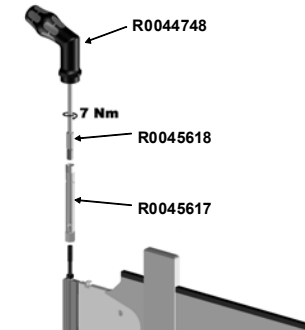
3 Transport

For the transportation of frames, a suitable transporting trolley should be used. The frames should always be in the upright position for transportation.

4.7 Height setting of the DRC30- DRC3-DRC2

DRC30

To secure the DRC30 connector, used for the height setting of the frame in the loom, the nut needs to be fastened. This nut needs to be torqued at 7 Nm. The correct torque can be applied to the nut using the parts BA305886 (torque wrench) and BA310345 (tube spanner). Alternatively, a set of Steel Hedde® original parts can be ordered to tighten the nut: Steel Hedde® part numbers R0044748 (torque wrench), R0045617 (tube spanner) and R0045618 (hex bit).



DRC3

If you have frames with DRC3 connection, the DRC3 nut should be tightened at 2.5Nm.

DRC2

To connect the frames with a DRC2 system, refer to the loom manual.

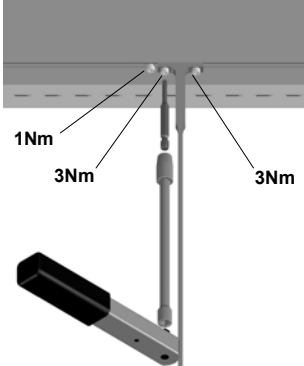
4.8 Setting the third driving element

In case a third driving element is mounted on the frames, make sure the connection is always tightened with a torque of 12 Nm.



4.6 Setting the center support

For harness frames equipped with a center support it is essential these center supports are correctly mounted onto the frame. We recommend putting the center support onto the harness frame BEFORE installing the frames into the weaving machine.

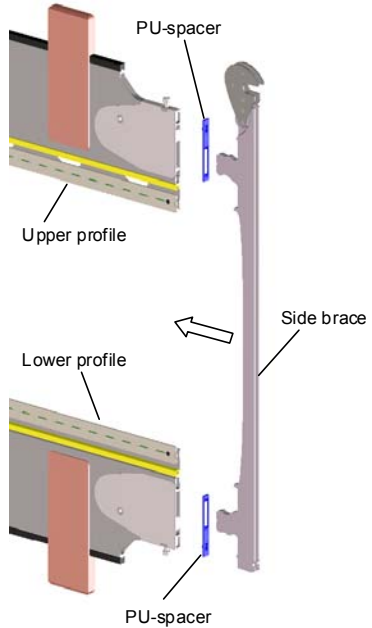
	<ol style="list-style-type: none"> 1. Click the center support into the profile. Make sure to align the center support perpendicular to the profiles. 2. Fix bolt the first bolt hand tight to 1 Nm. This bolt is used to correctly position the center support. 3. Fix the 2 other bolts and to a torque of 3 Nm with the correct torque wrench (Steel Heddle® part number R0044747). 4. If needed, additional torque wrenches can be ordered at Steel Heddle® (see section 7).
---	--

IMPORTANT

Always use original Steel Heddle® spare parts. The bolt used to tighten the corner connection has a specific length and shape, in order to obtain the correct torque. If you use bolts other than the bolts supplied by Steel Heddle®, life time of the corner connection can be seriously shortened, and warranty will be lost.

4 Harness frame assembly

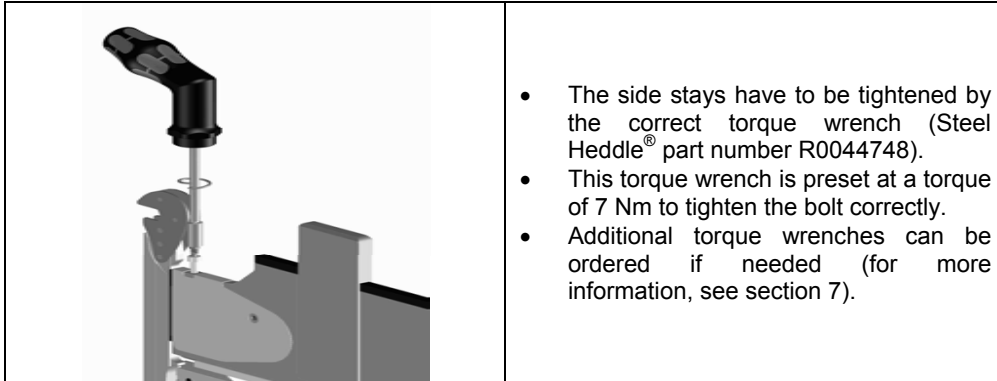
4.1 Connecting the side brace to the profiles

	<ol style="list-style-type: none"> 1. Make sure the bolt is loosened far enough (minimum 6 mm), so the side brace can be mounted. 2. Make sure the PU-spacers are placed between the profiles and the side brace. 3. Insert the side brace into the frame profile. 4. Close the bolt with a torque of 7 Nm. 5. This has to be done at the 4 connection points.
--	---

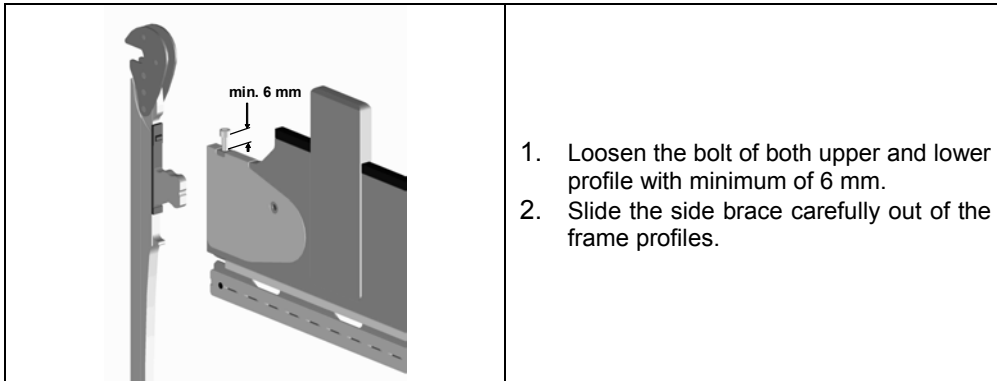
IMPORTANT

Make sure that all bolts are tightened as instructed in this manual by using the correct and original Steel Heddle® torque wrench. Moreover, it is recommended to regularly check the bolts and to retighten them in order to guarantee long life time and less frame breakages.

4.2 Tool

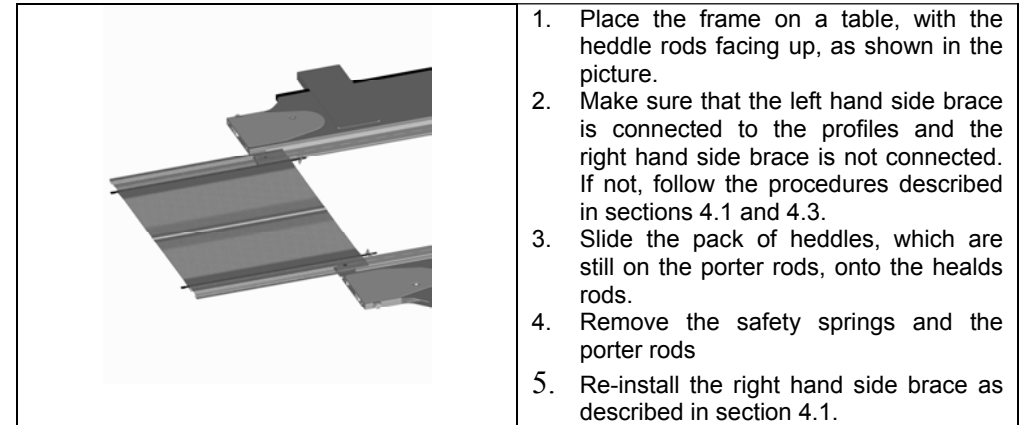


4.3 Disconnecting the side brace from the profiles



4.4 Mounting the healds

Following method can be used for manual mounting of the healds. For automatic mounting of the healds, refer to the manual of the automatic drawing in machine.



4.5 The R-flex

The flexible corner connection is automatically correctly set when side brace is connected properly to the profile (see section 4).

While tightening the bolt, the connection comes under the required tension. Further tightening does not increase the tension on the profile; neither does it improve the tightening.

